

MISSION:

To use science-based information to promote an ecologically-functional wolf population within areas of suitable habitat, and promote human coexistence with emphasis on Michigan and Wisconsin.

TIMBER WOLF ALLIANCE

SIGURD OLSON ENVIRONMENTAL INSTITUTE

NORTHLAND COLLEGE





Wolves in Wisconsin

PRESENTED BY THE TIMBER WOLF ALLIANCE



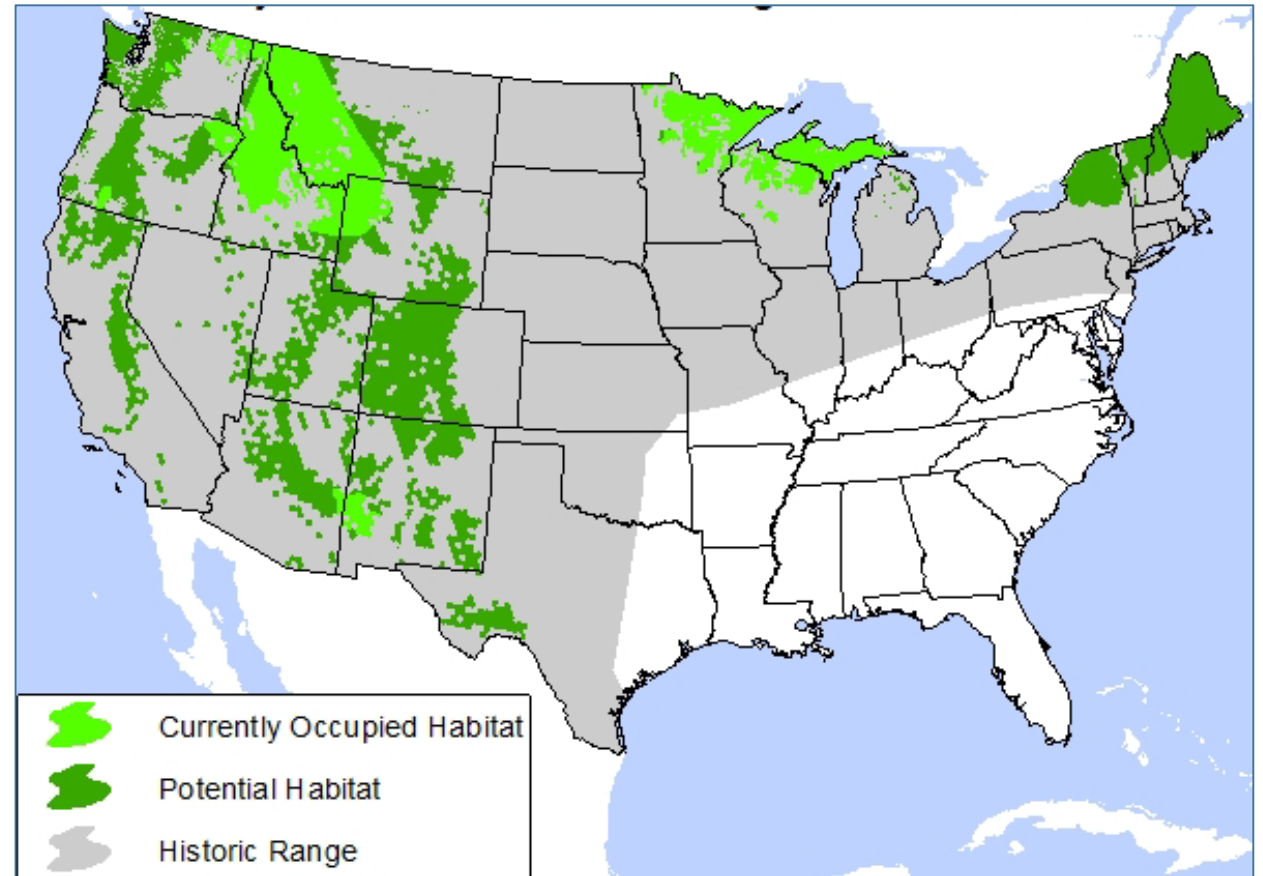
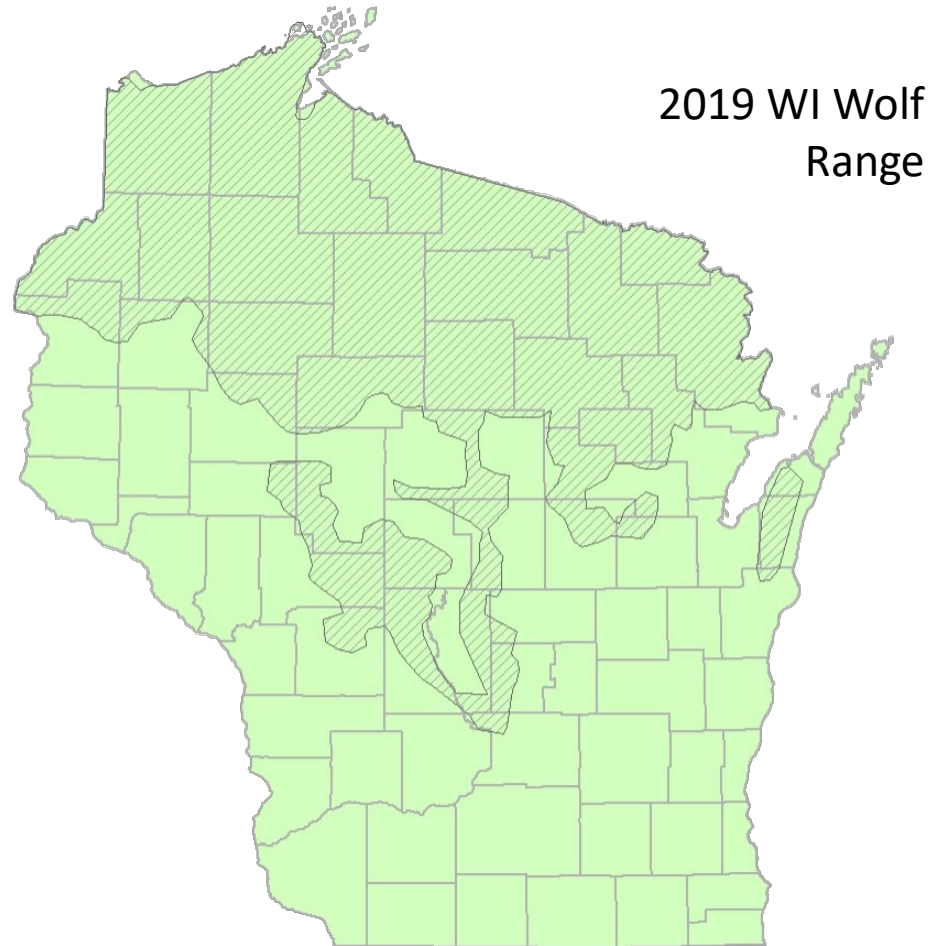
Common Myths

1. Wolves are Dangerous to People
2. Wolves Were Reintroduced to Wisconsin & Michigan
3. Wolves will Devastate the Deer Herd
4. Wolves are a Major Risk to Livestock Industry
5. It is not Safe to Walk Dogs in Areas Occupied by Wolves

The Gray Wolf



Gray Wolf Range





Coyotes



How to distinguish?



Wolf and Coyote Comparison

Height and Weight

Facial Features

Paws

Paws



Dog



Wolf



Wolf



Shown to scale
(not actual size)

Coyote

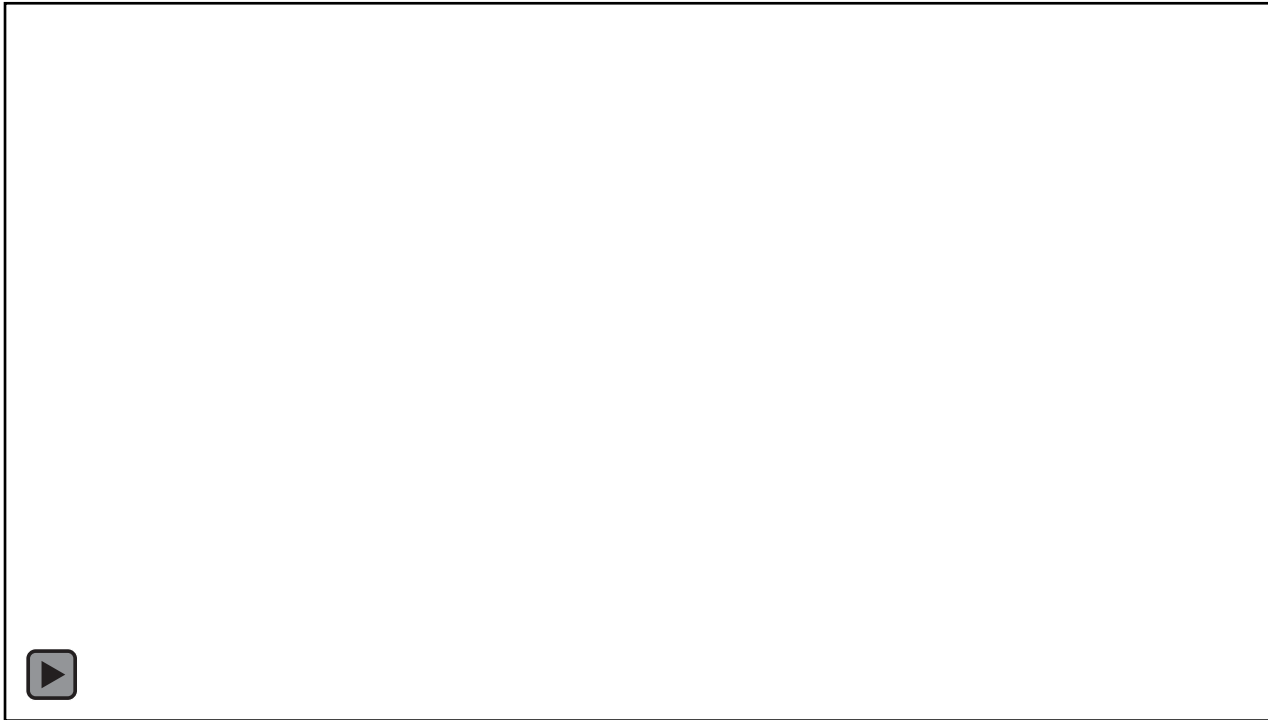
Pack Structure & Territory

- 🐾 Territory: 30-100 square miles
- 🐾 Breeding Pair
- 🐾 Pups, yearlings, 2+ year old adults
- 🐾 Family structure

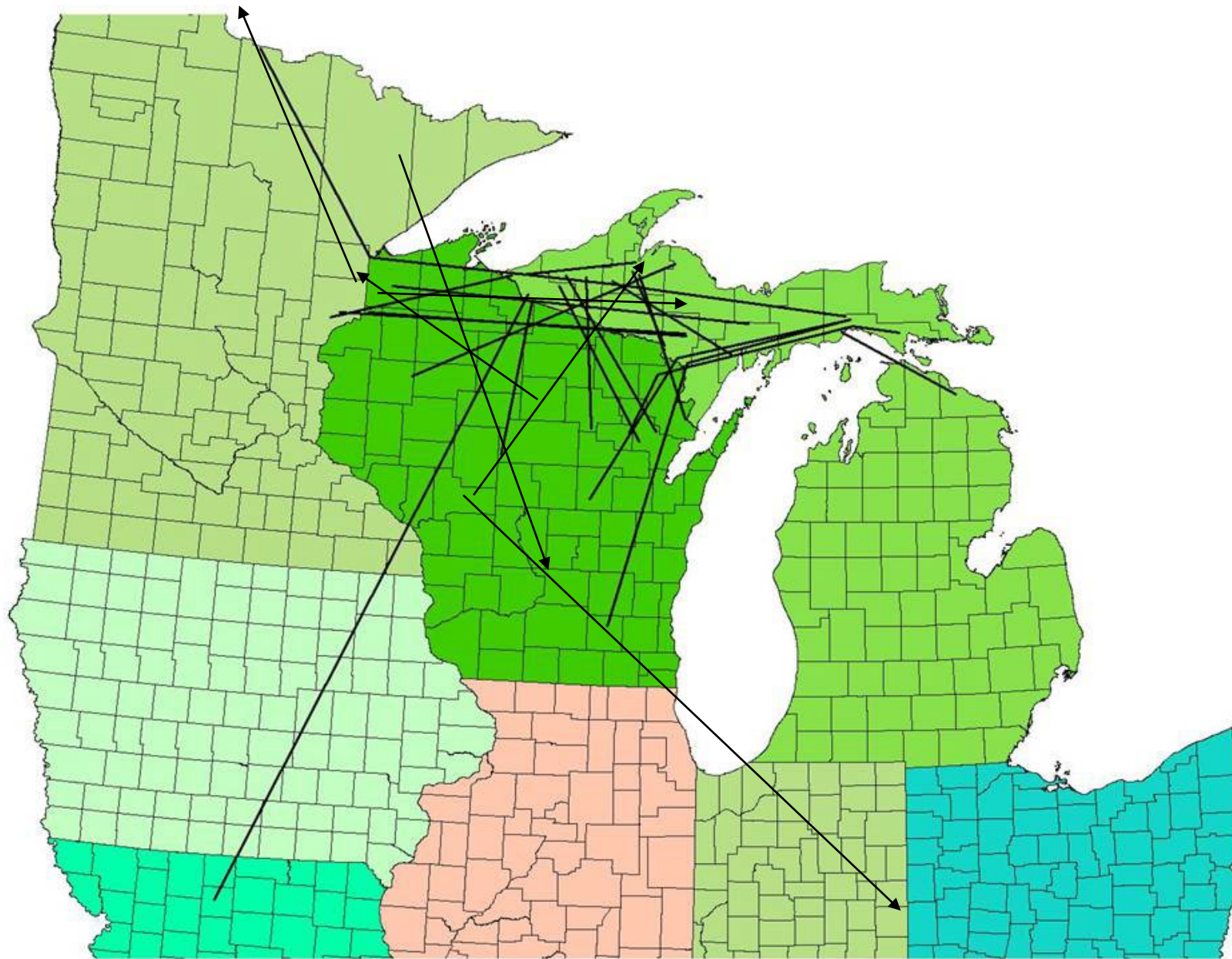




Communication



- 🐾 Defending the Territory
- 🐾 Scent Marking
- 🐾 Howling
- 🐾 Barking
- 🐾 Attack trespassers

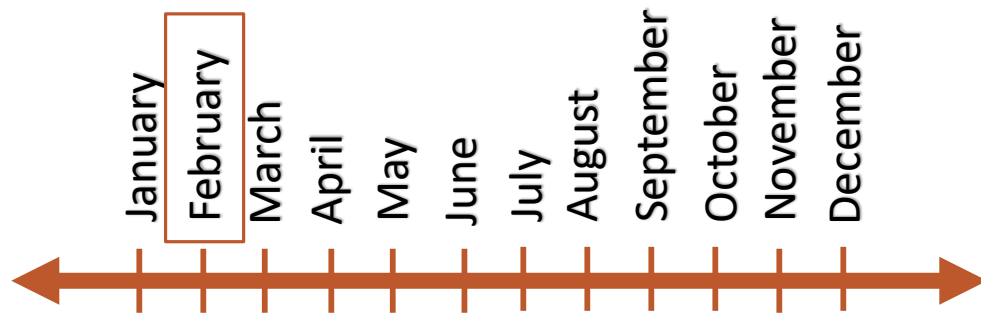


Long Distance
Dispersal from
Wisconsin
And Michigan



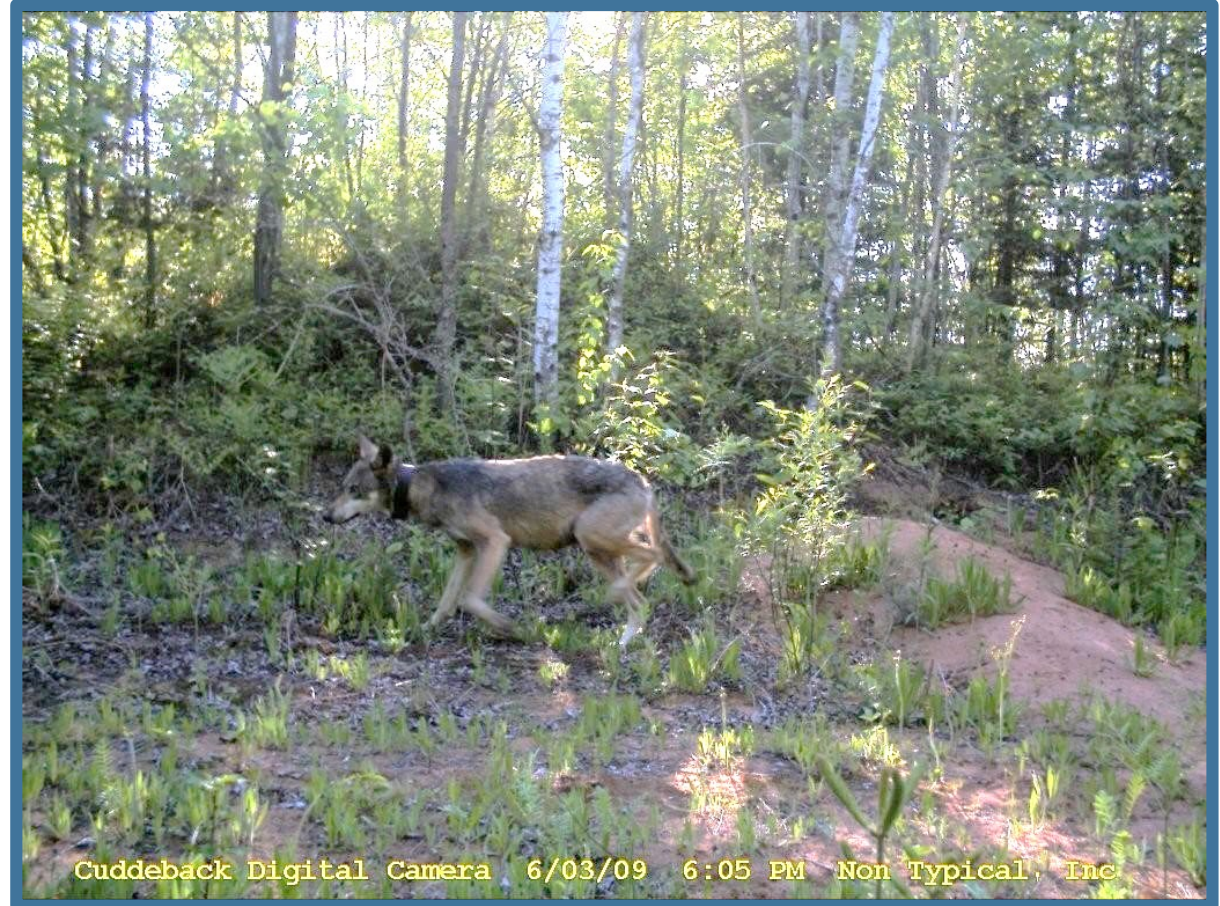
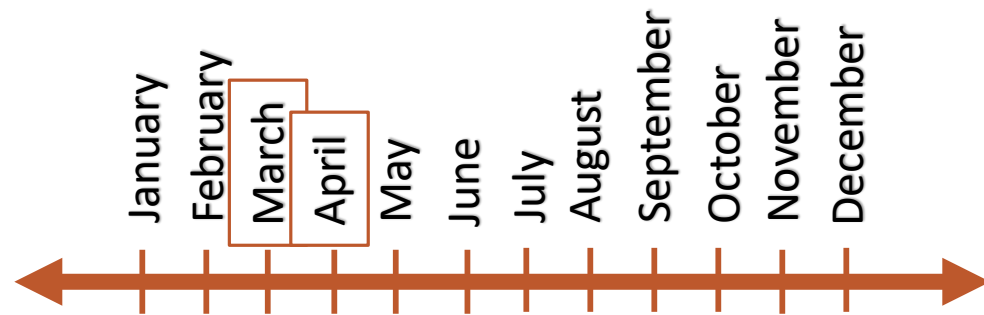
A Year in the Life of a Wolf Pack

Breeding



A Year in the Life of a Wolf Pack

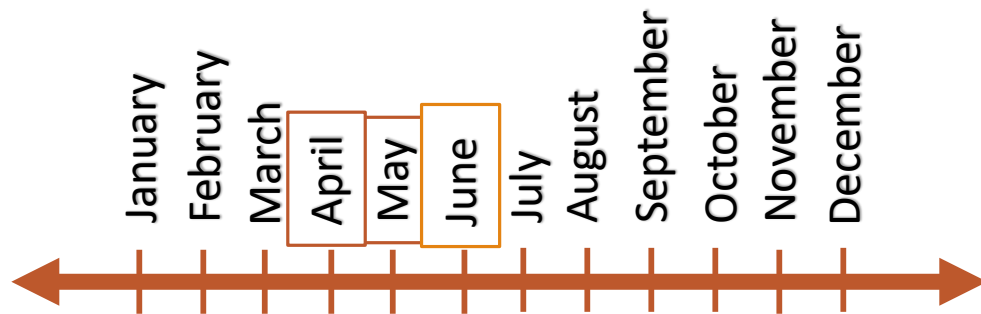
Preparing the Den





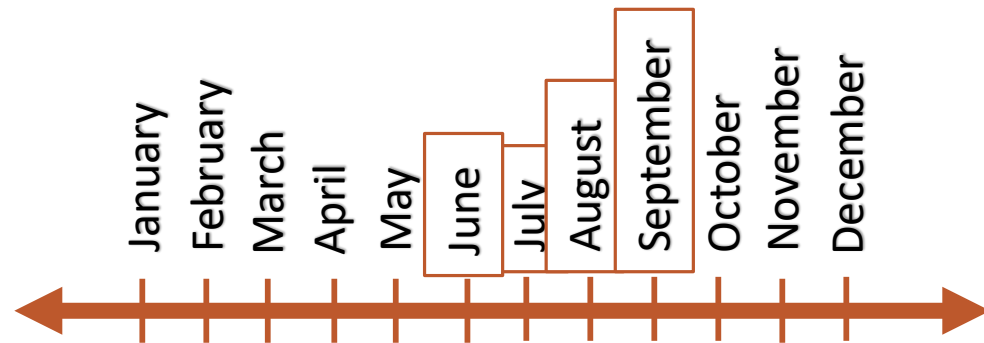
A Year in the Life of a Wolf Pack

Pups Born & Denning



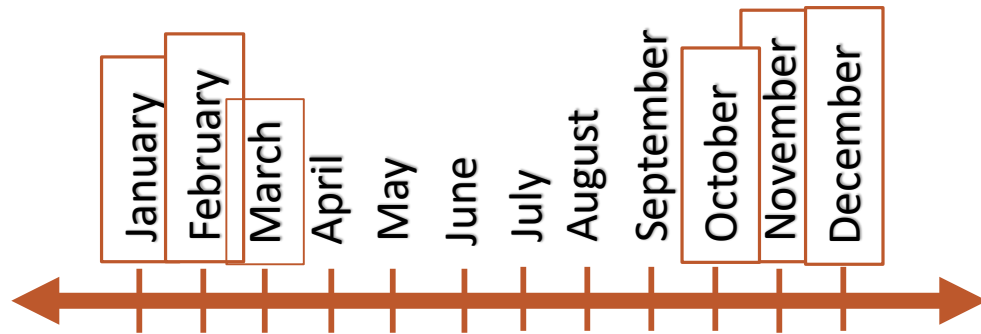
A Year in the Life of a Wolf Pack

Rendezvous Site



A Year in the Life of a Wolf Pack

Nomadic Pack Travel





Life as a Carnivore

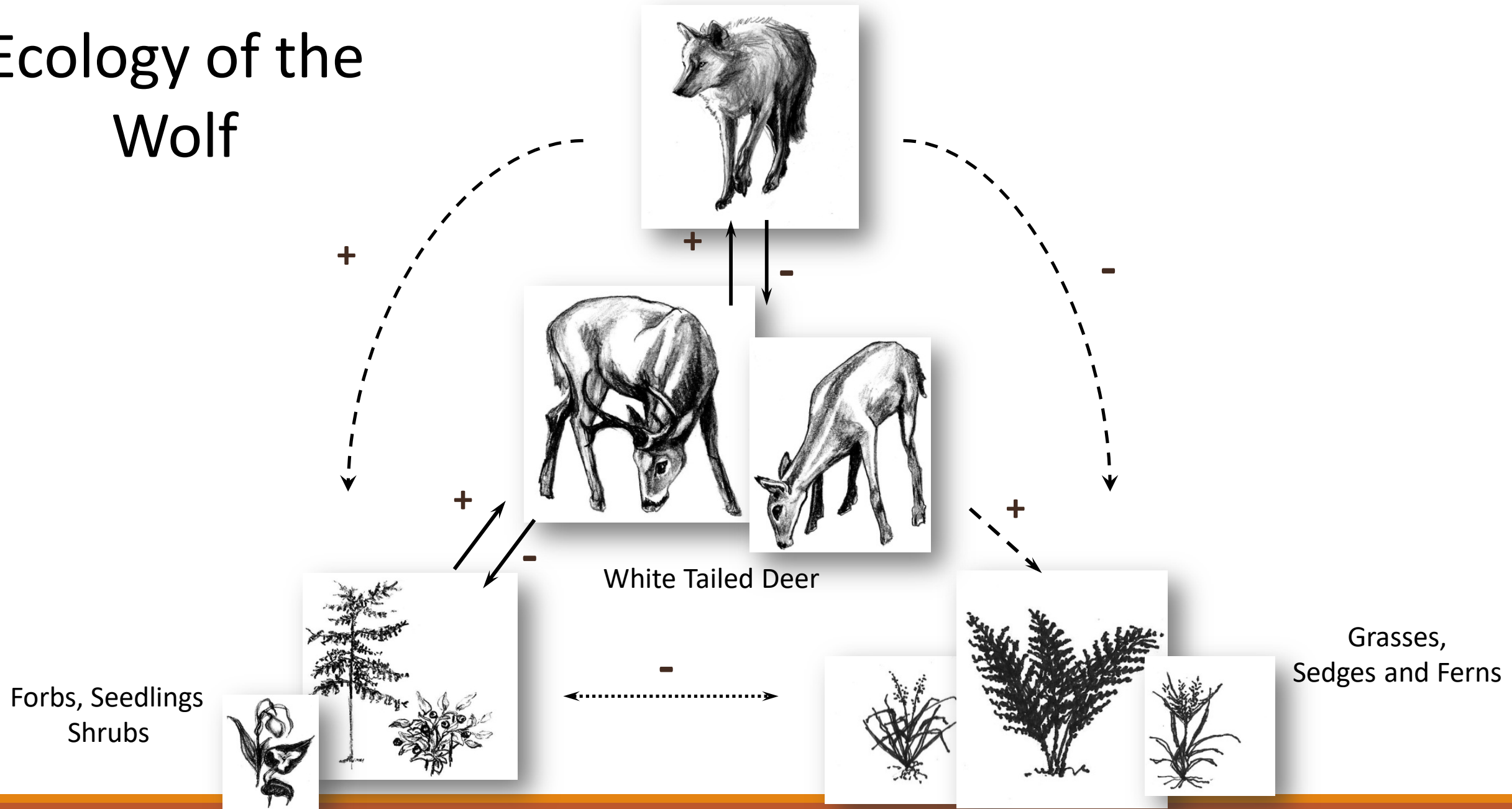
UNGULATES



BEAVER



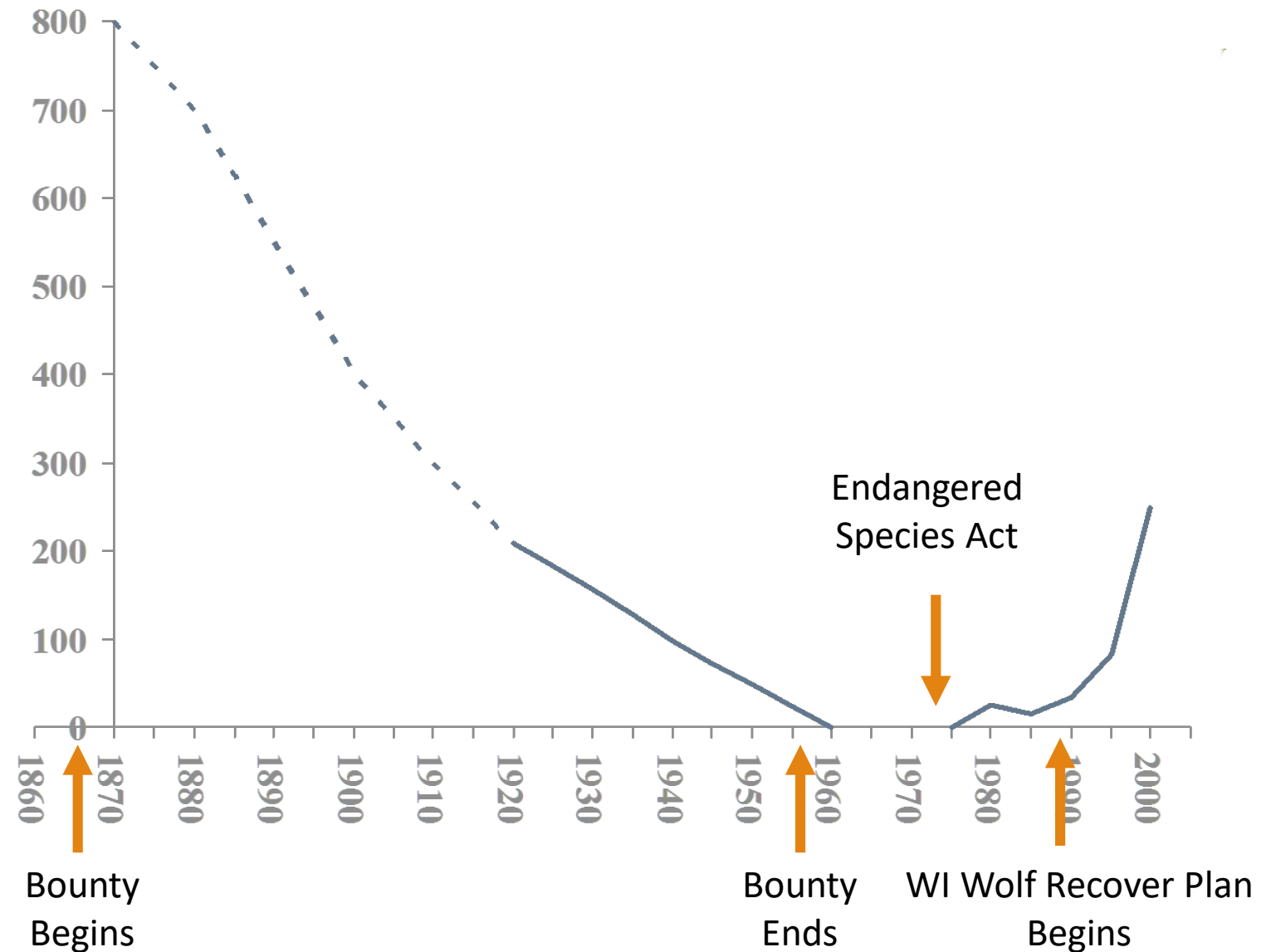
Ecology of the Wolf



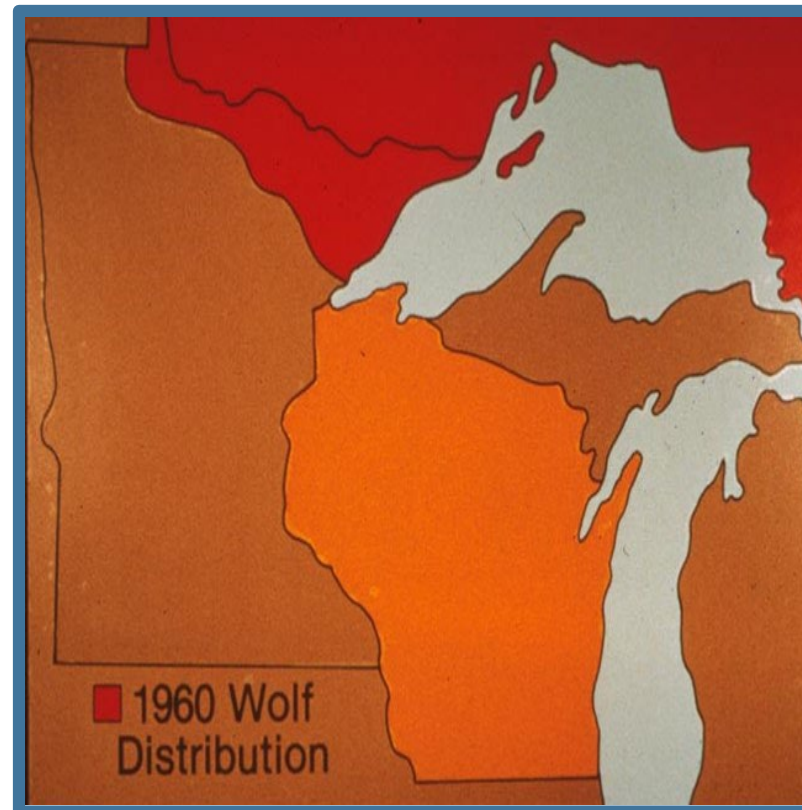
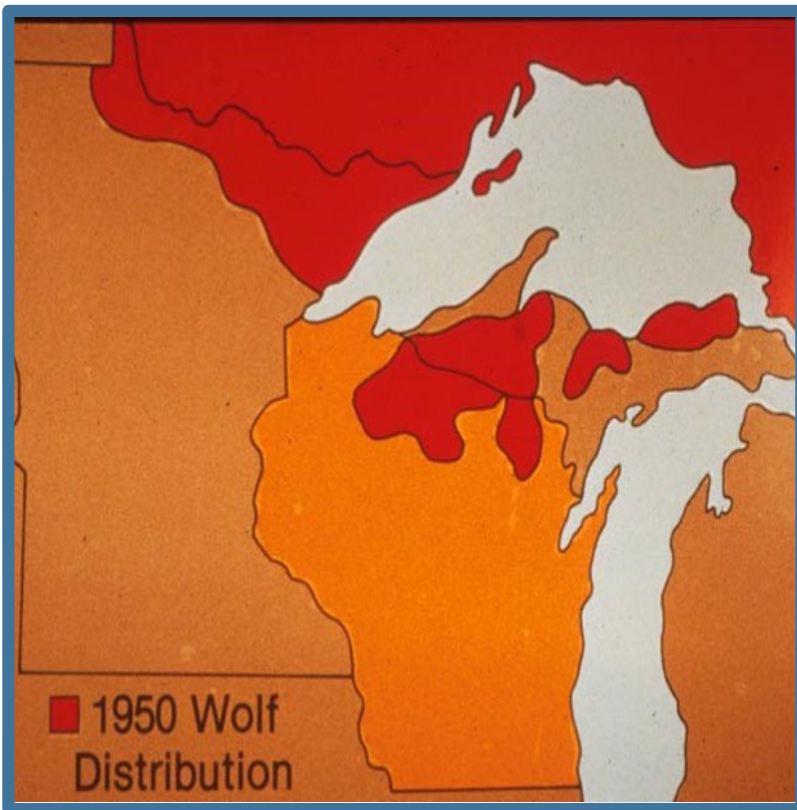
Disappearance and Return of the Gray Wolf

Population Controls

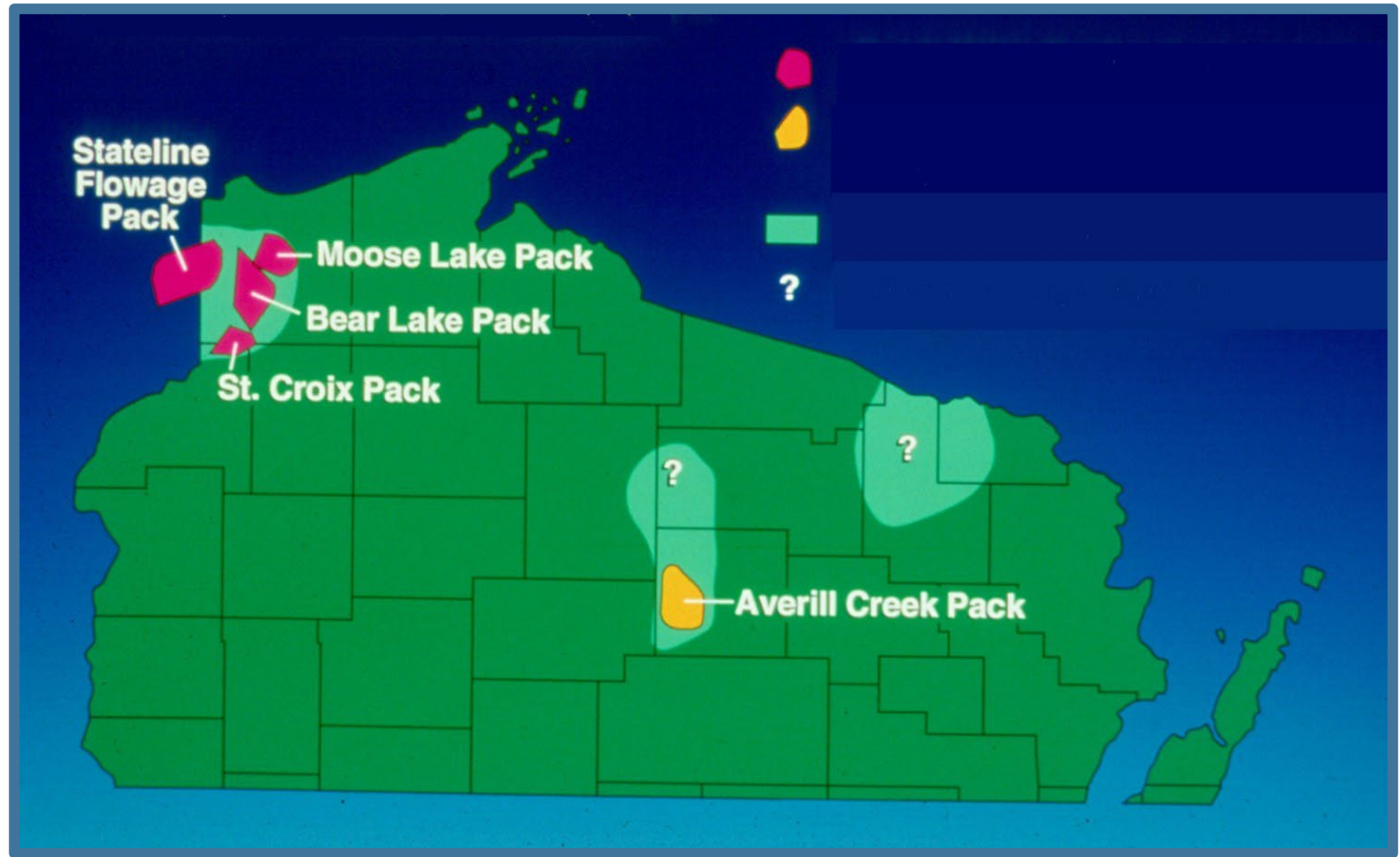
- 🐾 Hunting
- 🐾 Trapping
- 🐾 Poison



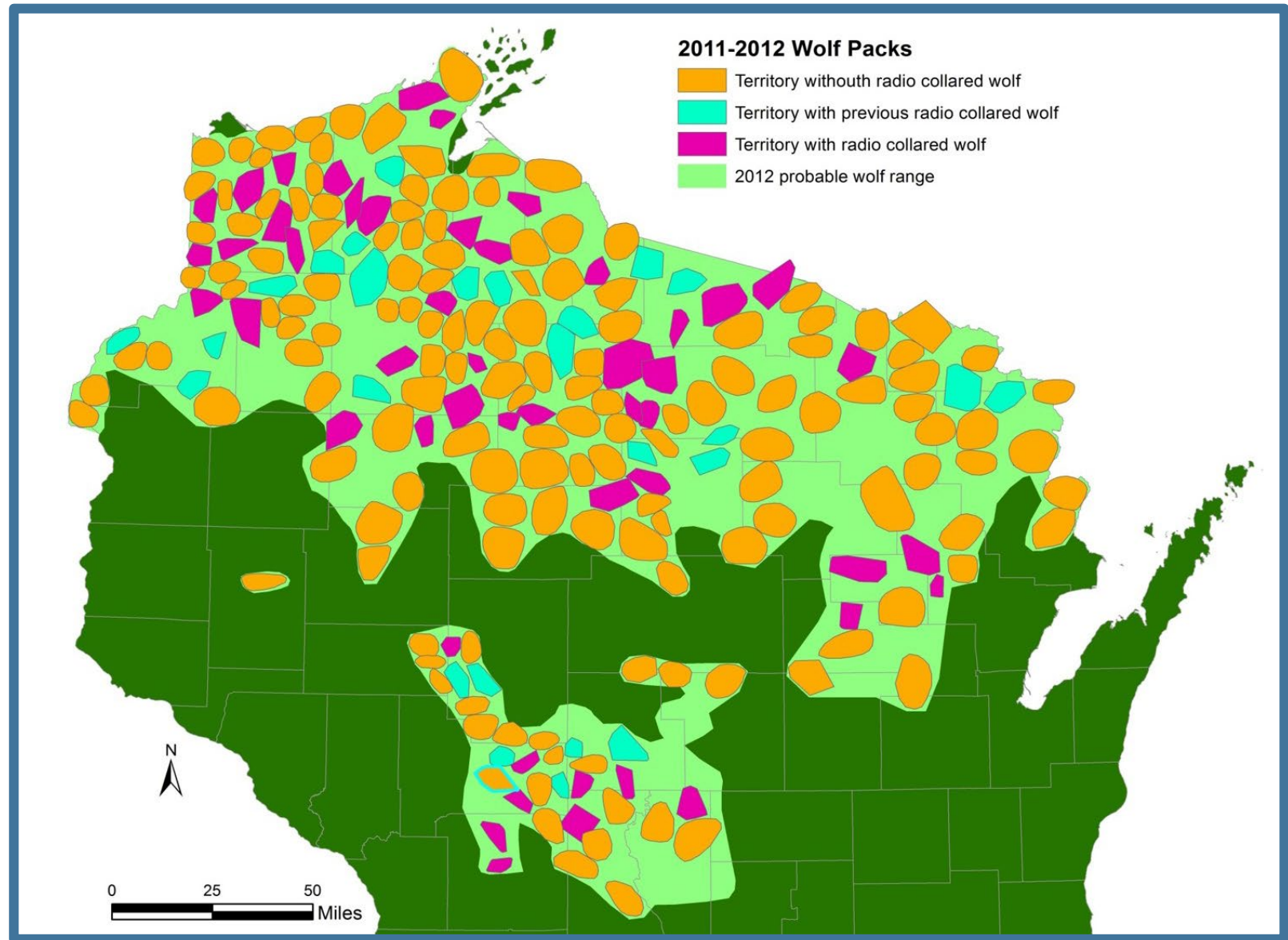
Wolf Distribution



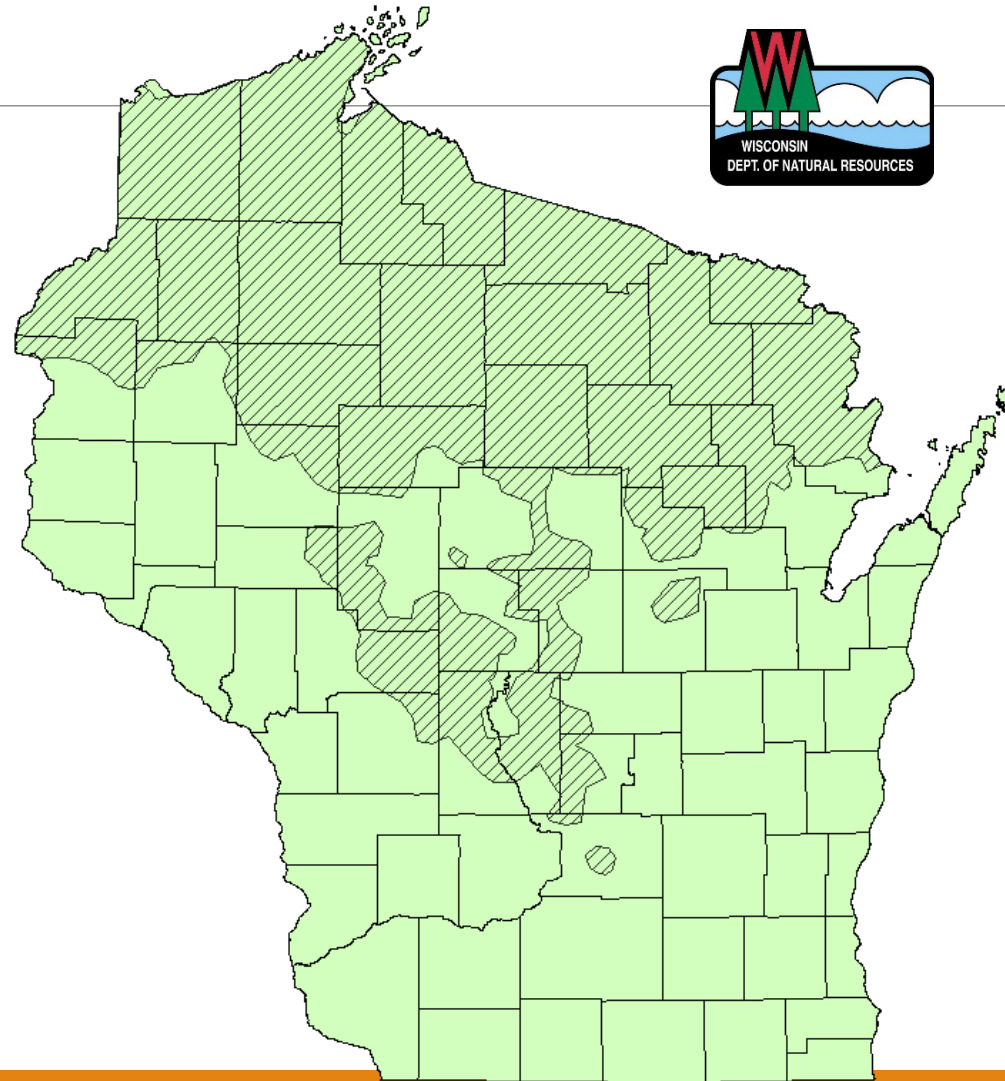
Pack locations 1979-1980



Pack Locations 2011-2012

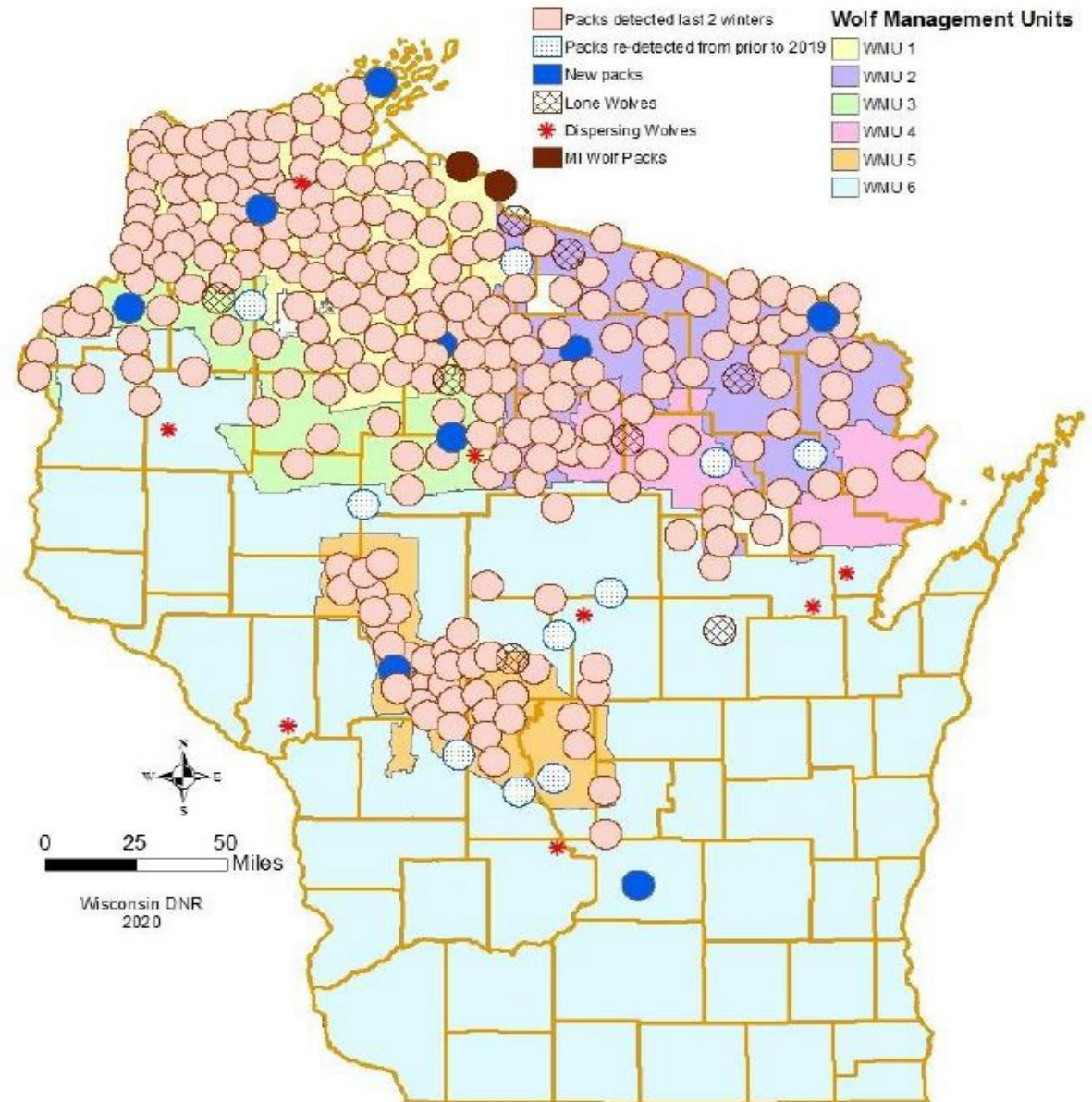


Probable Range of Wolf Packs in Wisconsin in 2020



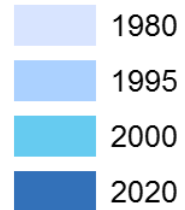


Wolves Detected in Wisconsin in winter 2019-2020

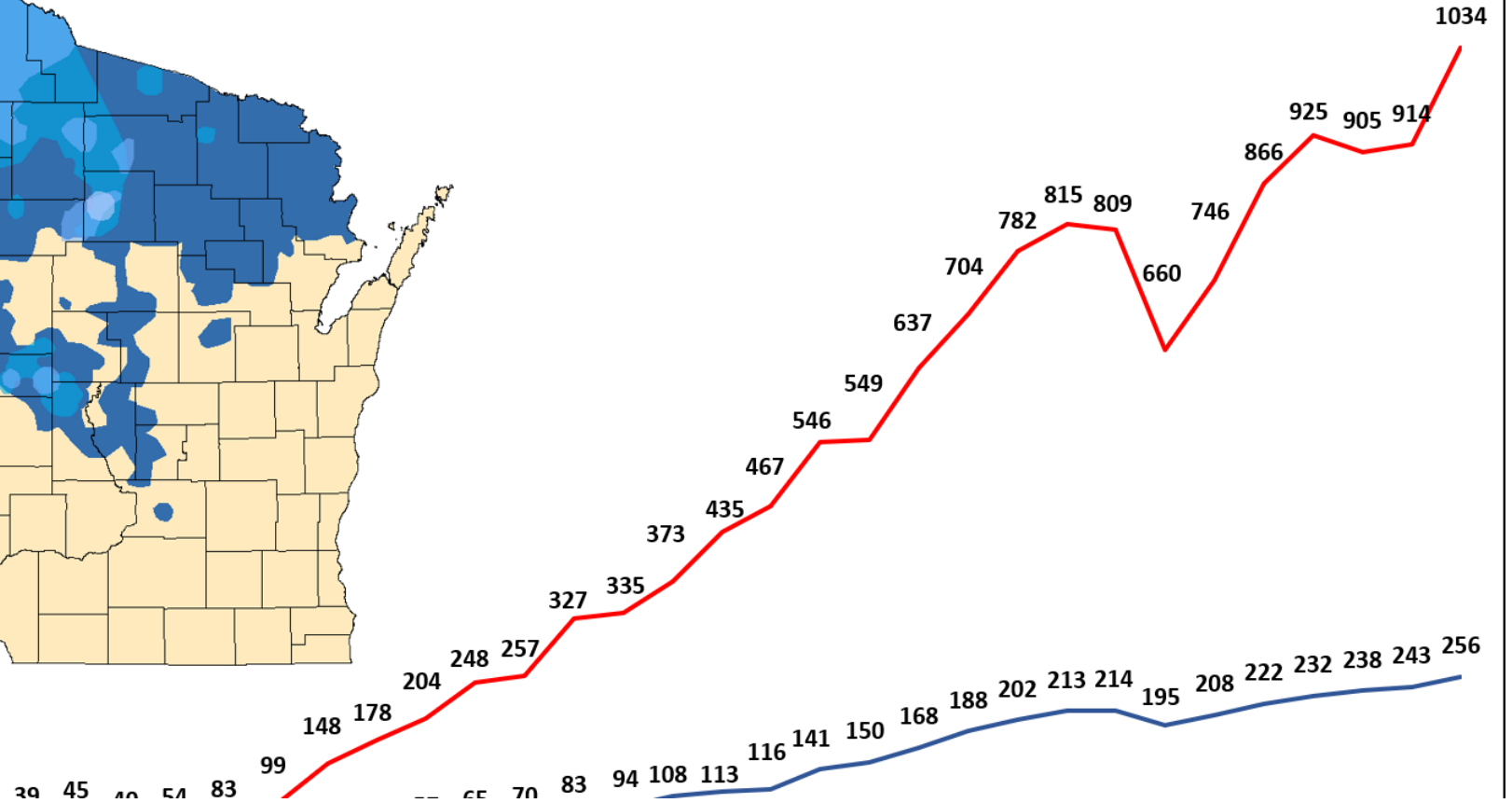




Changes in Wisconsin Gray Wolf Population and Range: 1980-2020



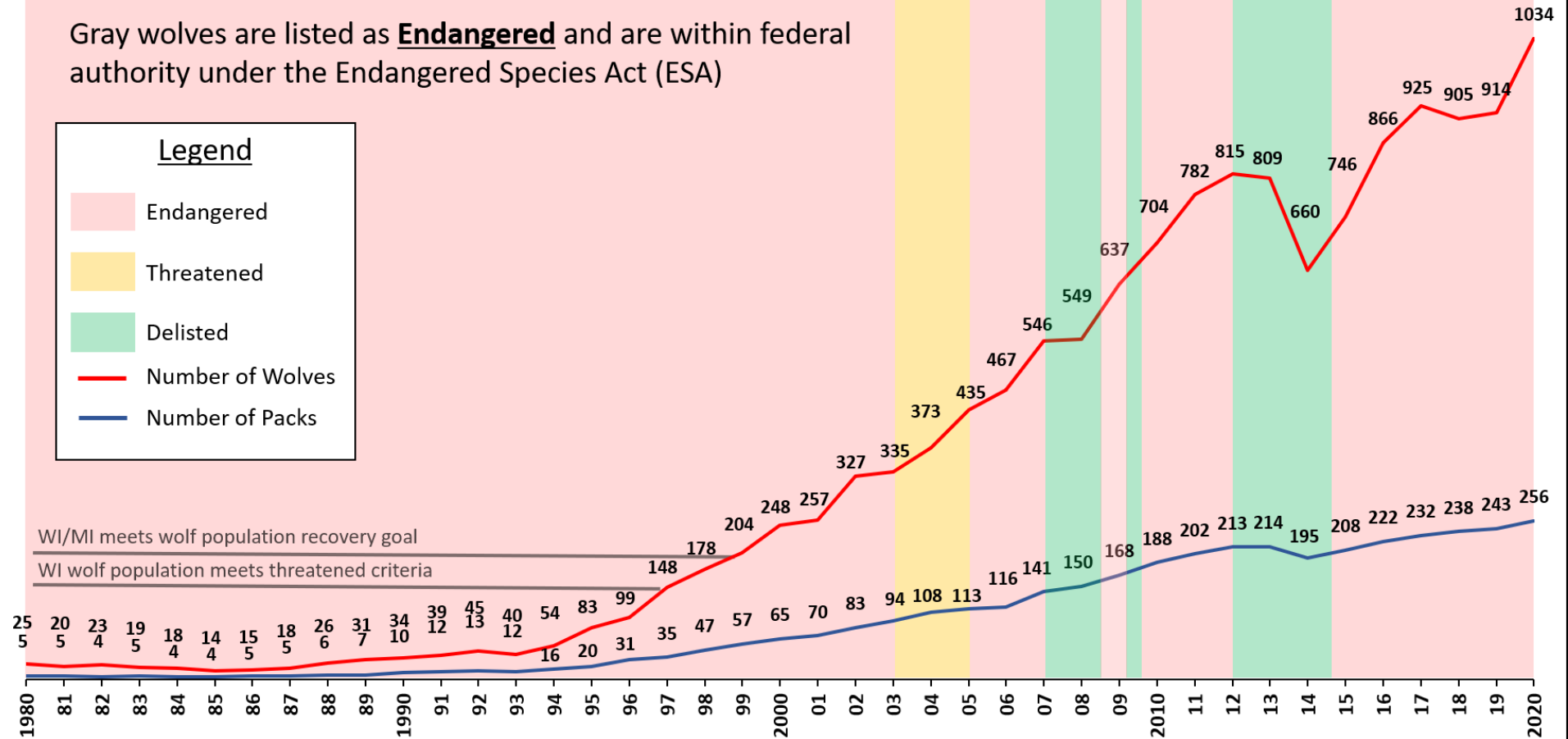
— Number of Wolves
— Number of Packs





Wisconsin Gray Wolf Population and Federal Status: 1980-2020

Gray wolves are listed as **Endangered** and are within federal authority under the Endangered Species Act (ESA)

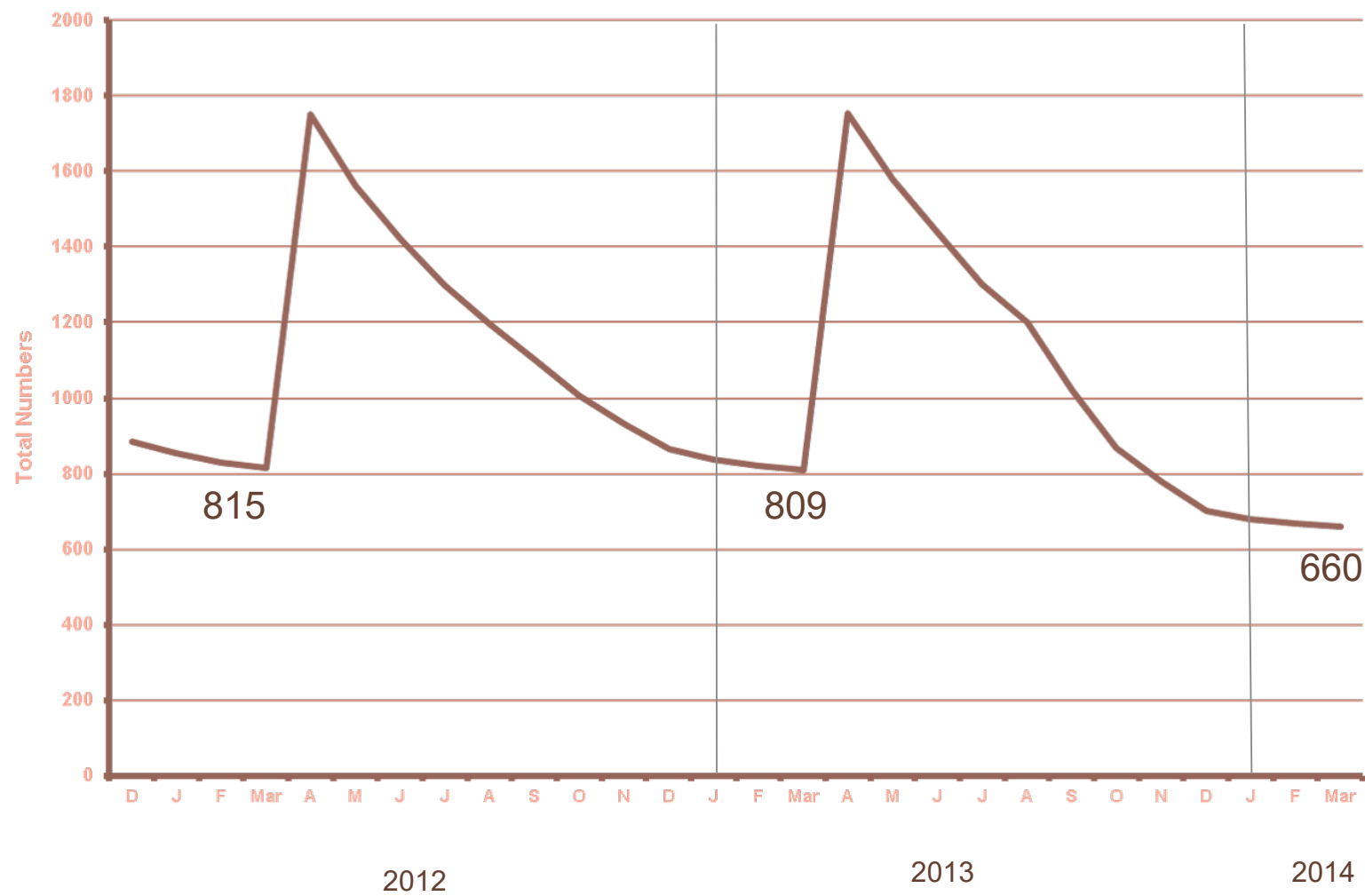




Annual Wolf Population Cycling in WI



Annual Cycle of Wolf Population in Wisconsin

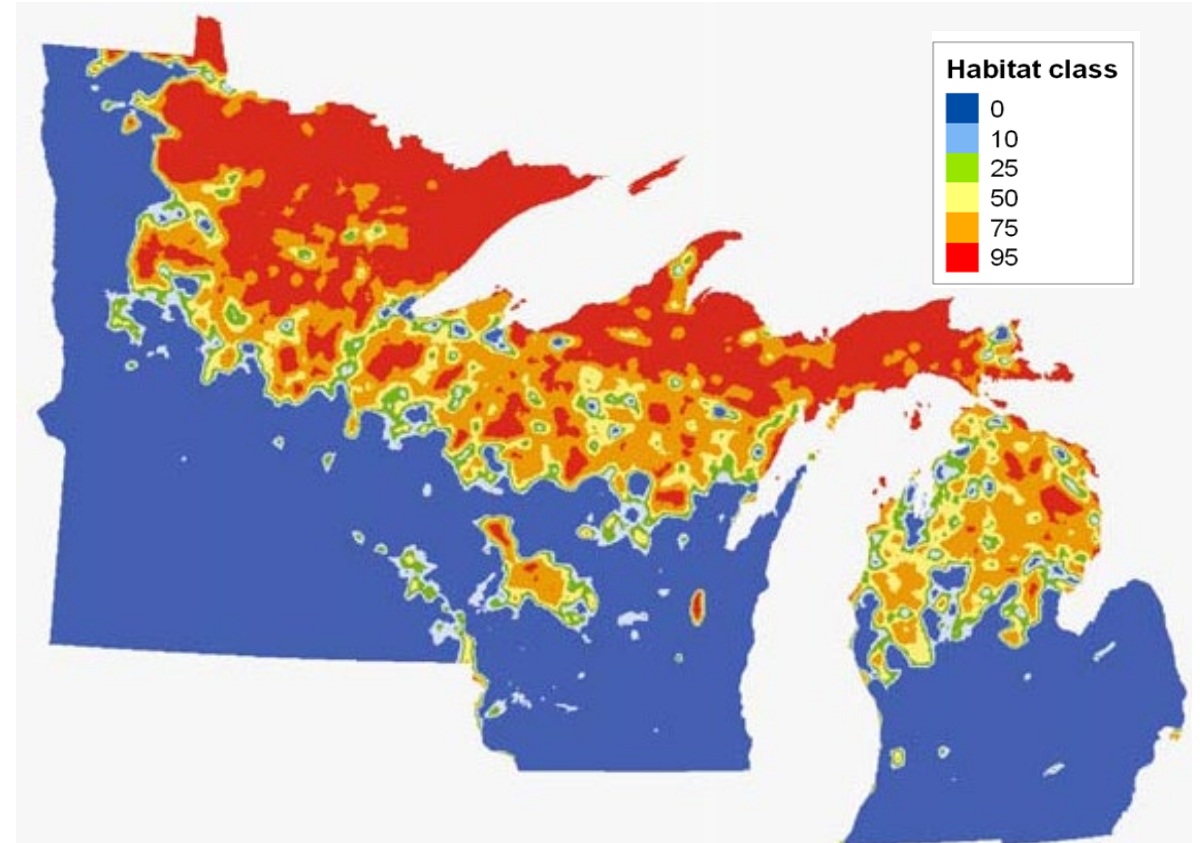
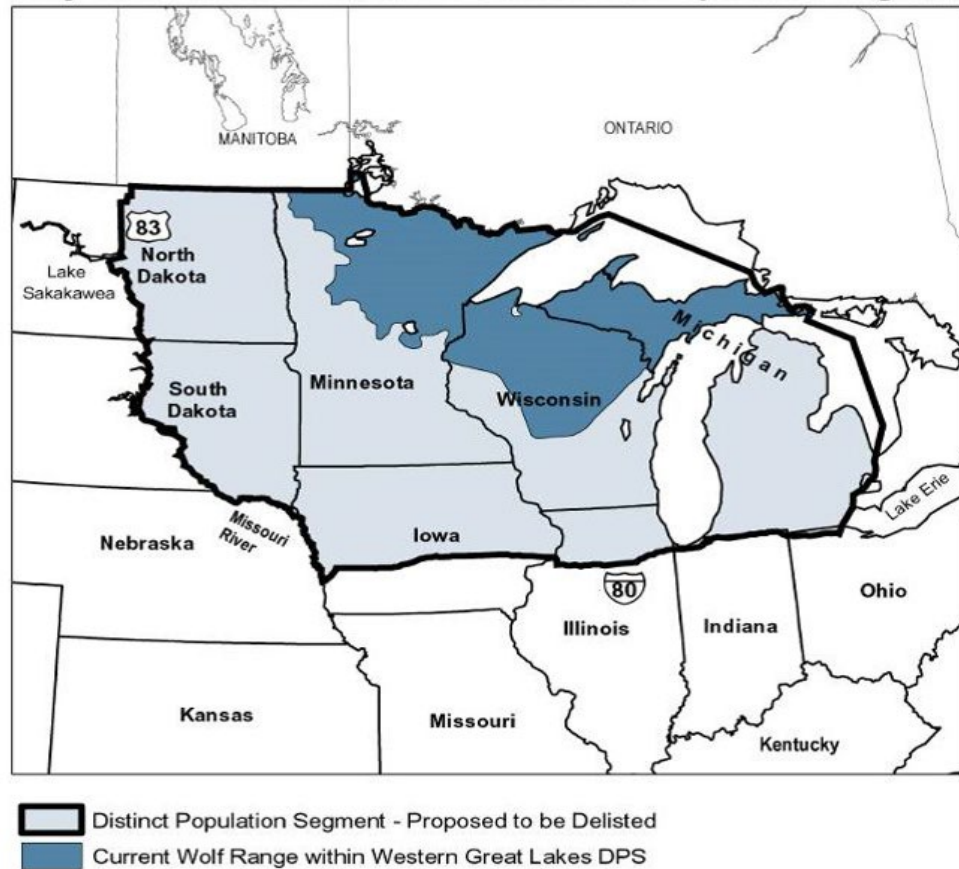


Wisconsin Grey wolves in the eyes of the Federal Government



1974- 2003	Endangered
April 13, 2012-Jan. 31, 2005:	Threatened
Mar. 12, 2005- Mar. 12 th , 2007	Endangered
Mar. 12, 2007 – Sept. 29 th , 2008	Delisted
Sept. 29, 2008-May 4, 2009	Endangered
May 4, 2009-July 1, 2009	Delisted
July 1, 2009- Jan. 26, 2012	Endangered
Jan. 27, 2012- Dec. 19, 2014	Delisted
Dec. 19 th , 2014- Jan 3, 2021	Endangered
Jan. 4, 2021-present	Delisted
February 10, 2022-present	Endangered

Western Great Lakes Population Segment



Population Monitoring

VHF and GPS Collars

- 🐾 Trapped and collared late spring and early summer
 - 🐾 approximately 25% of packs collared
- 🐾 approximately 5-10% of individuals collared
 - 🐾 Trap using foot hold traps
- 🐾 Chemically immobilize and monitor vitals while collaring and assessing the animals health



Population Monitoring

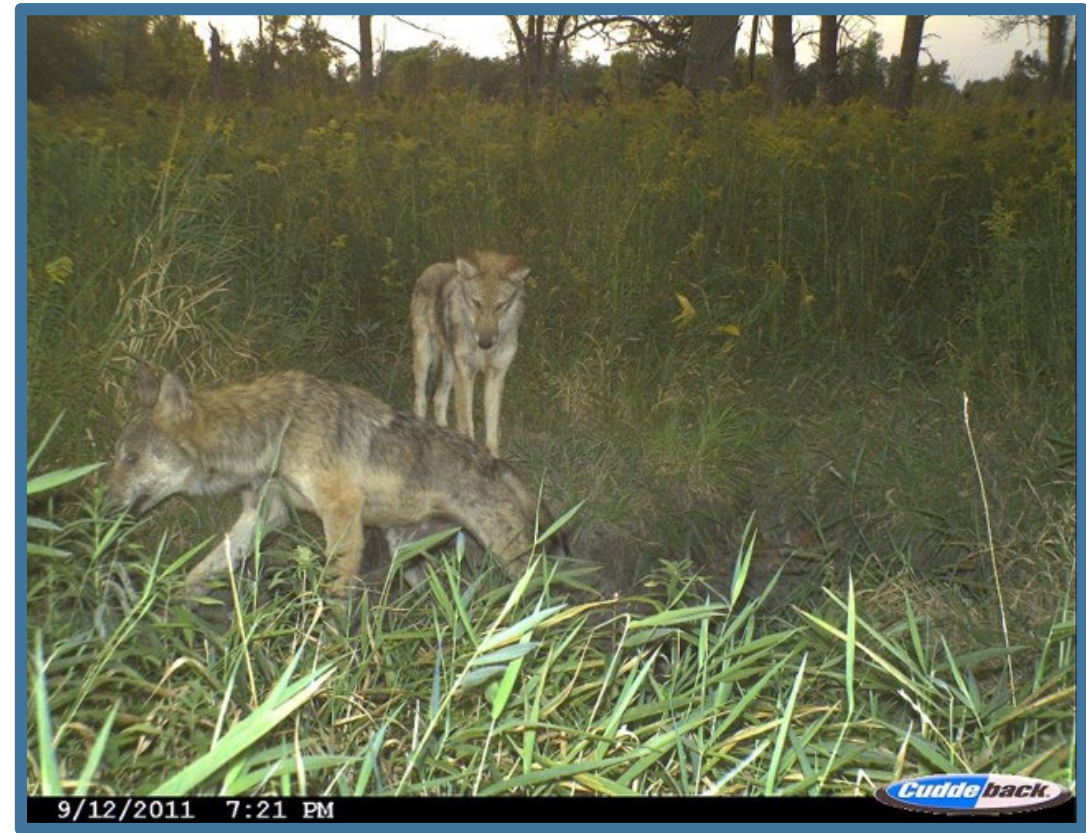
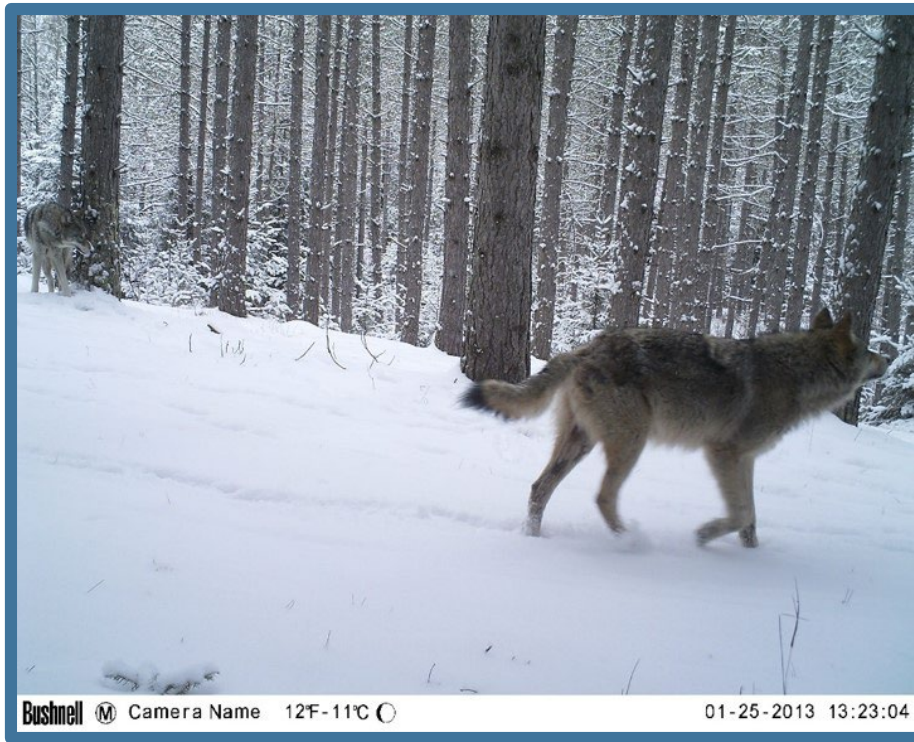


Snow Track Surveys

- 🐾 Citizen Scientist and DNR staff
- 🐾 Assigned a tracking block
- 🐾 Complete Carnivore Tracking Course & Wolf Ecology course
- 🐾 More than 15,000-18,000 miles tracked in recent years

Population Monitoring

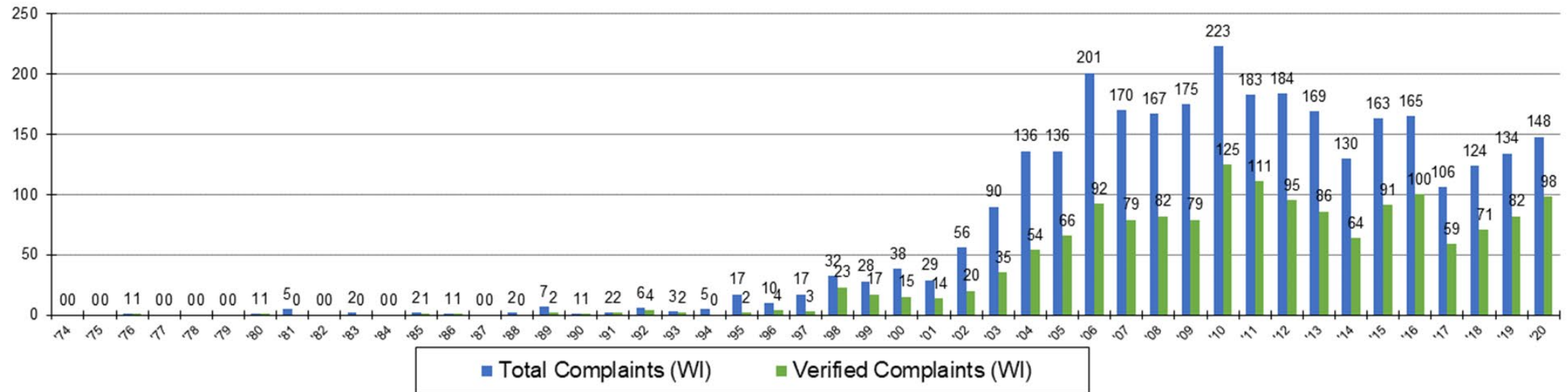
Observation Reporting



DATA FROM USDA-
WILDLIFE SERVICE IN
COOPERATION WITH
WISCONSIN
DEPARTMENT OF
NATURAL RESOURCES

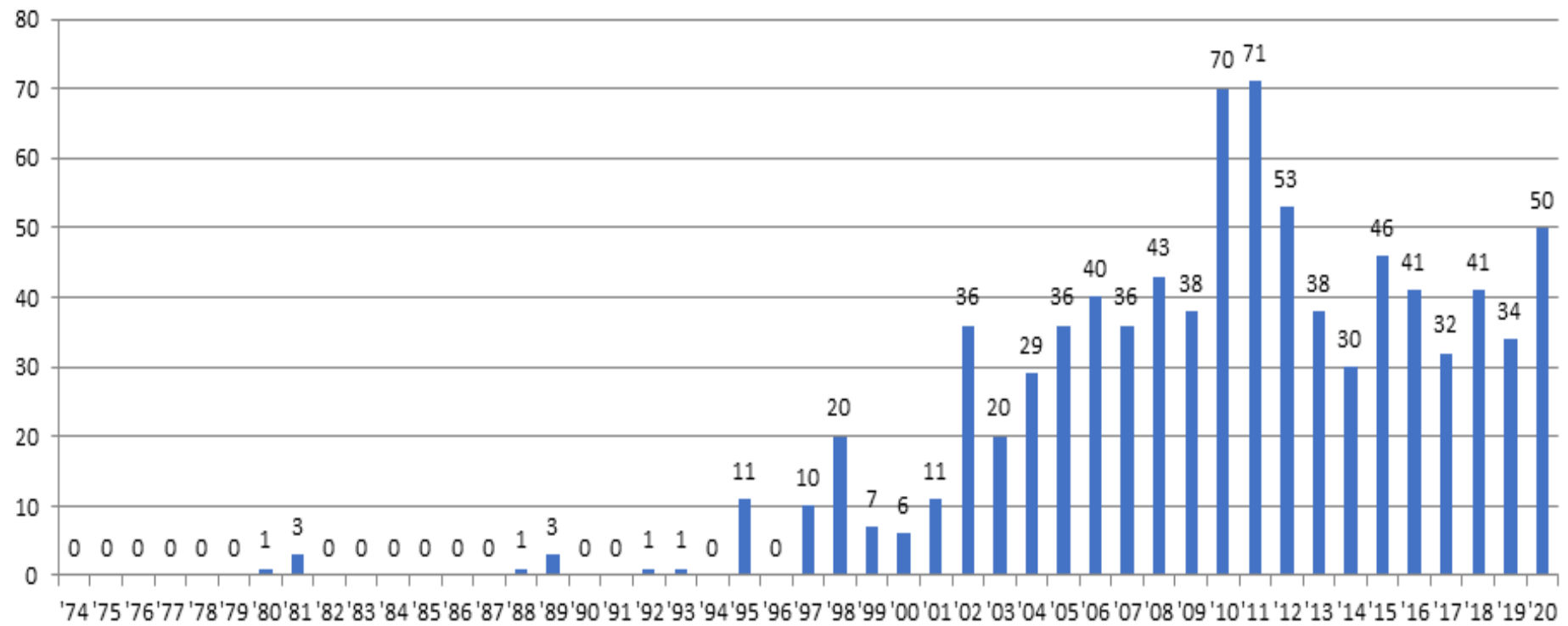
Wisconsin Wolf Depredations in 2020

Wolf Complaints investigated by WDNR - USDA/WS, 1974 - 2020
(3069 Complaints, 1582 Verified)

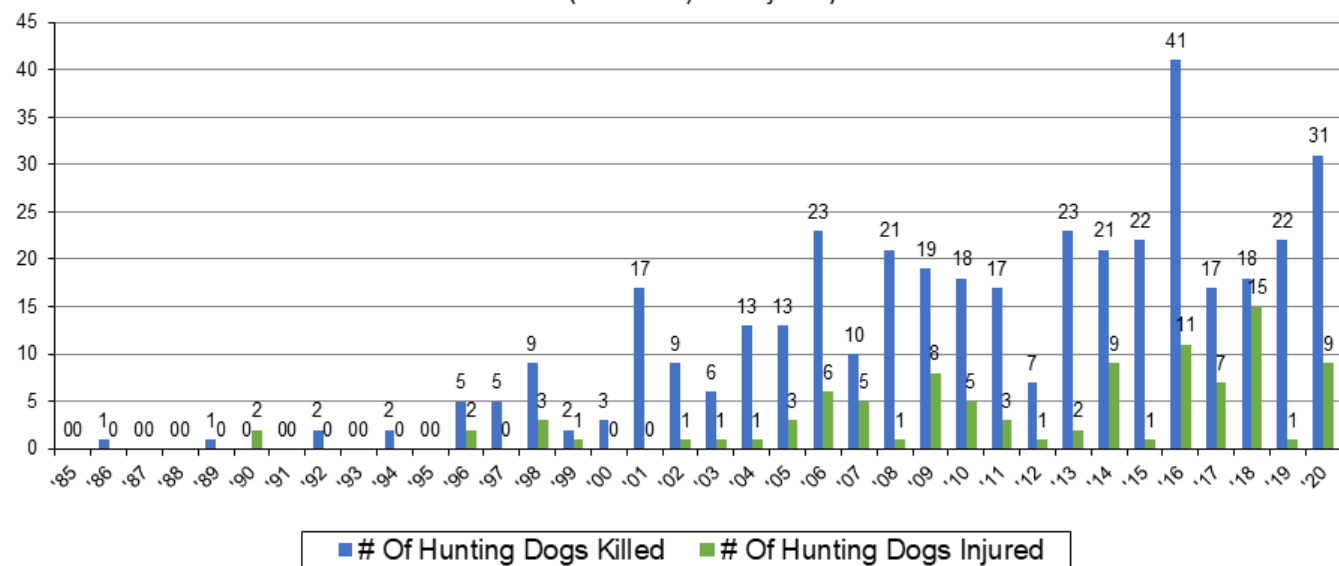


Wolf Complaints in Wisconsin investigated by WDNR-USDA/Wildlife Services 1974-2020

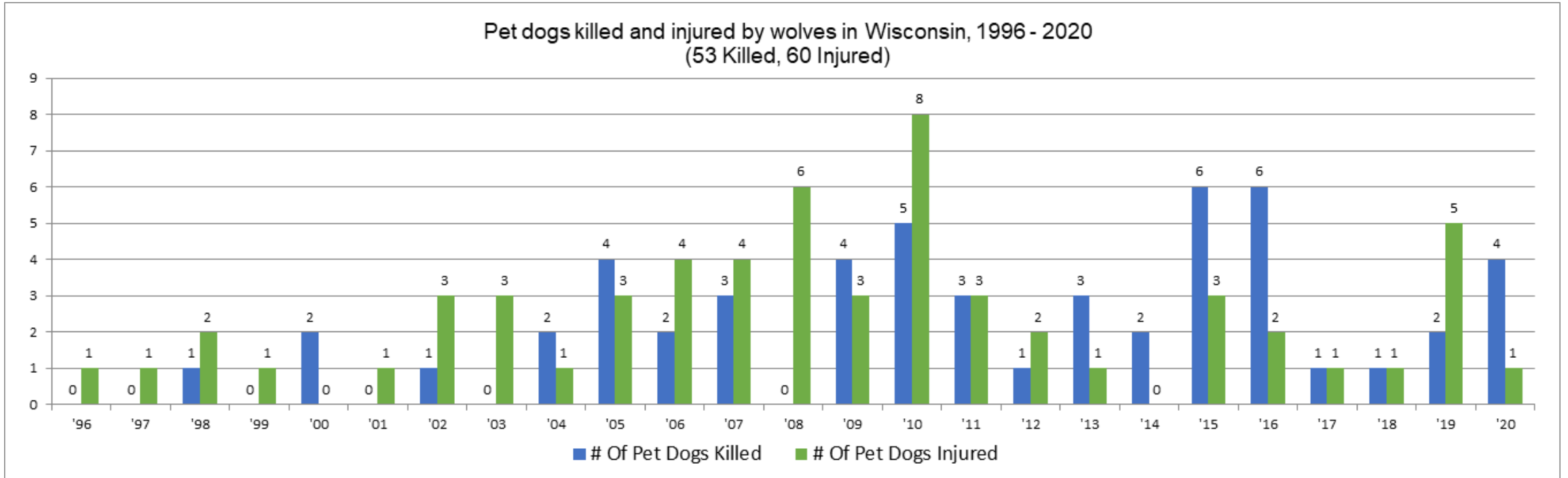
Cattle depredated (killed & injured) by wolves in Wisconsin, 1974 - 2020
(859 cattle)



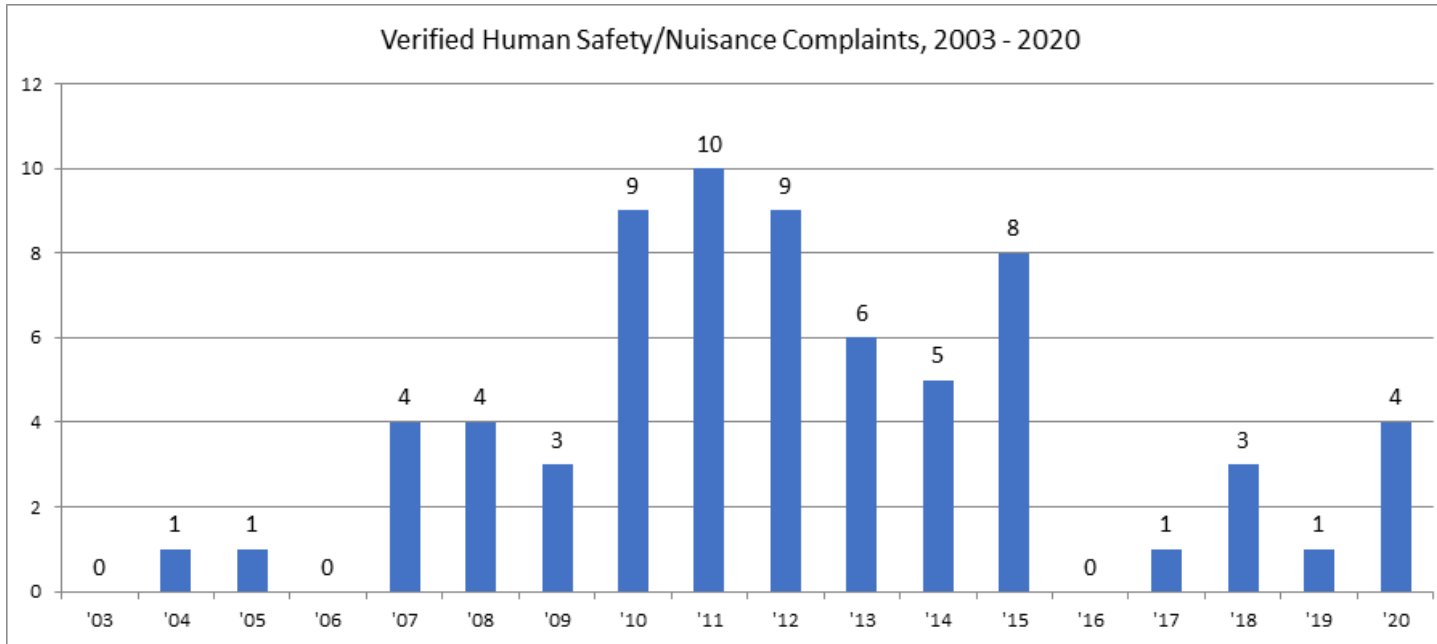
Hunting dogs killed and injured by wolves in Wisconsin, 1985 - 2020
(398 killed, 98 injured)



Hunting Dogs
Killed and Injured
by Wolves in
Wisconsin 1985-
2020



Verified Pet Dog Depredation by Wolves in Wisconsin, 1996-2020



Verified Wolf
Human Safety
/ Nuisance
Complaints.



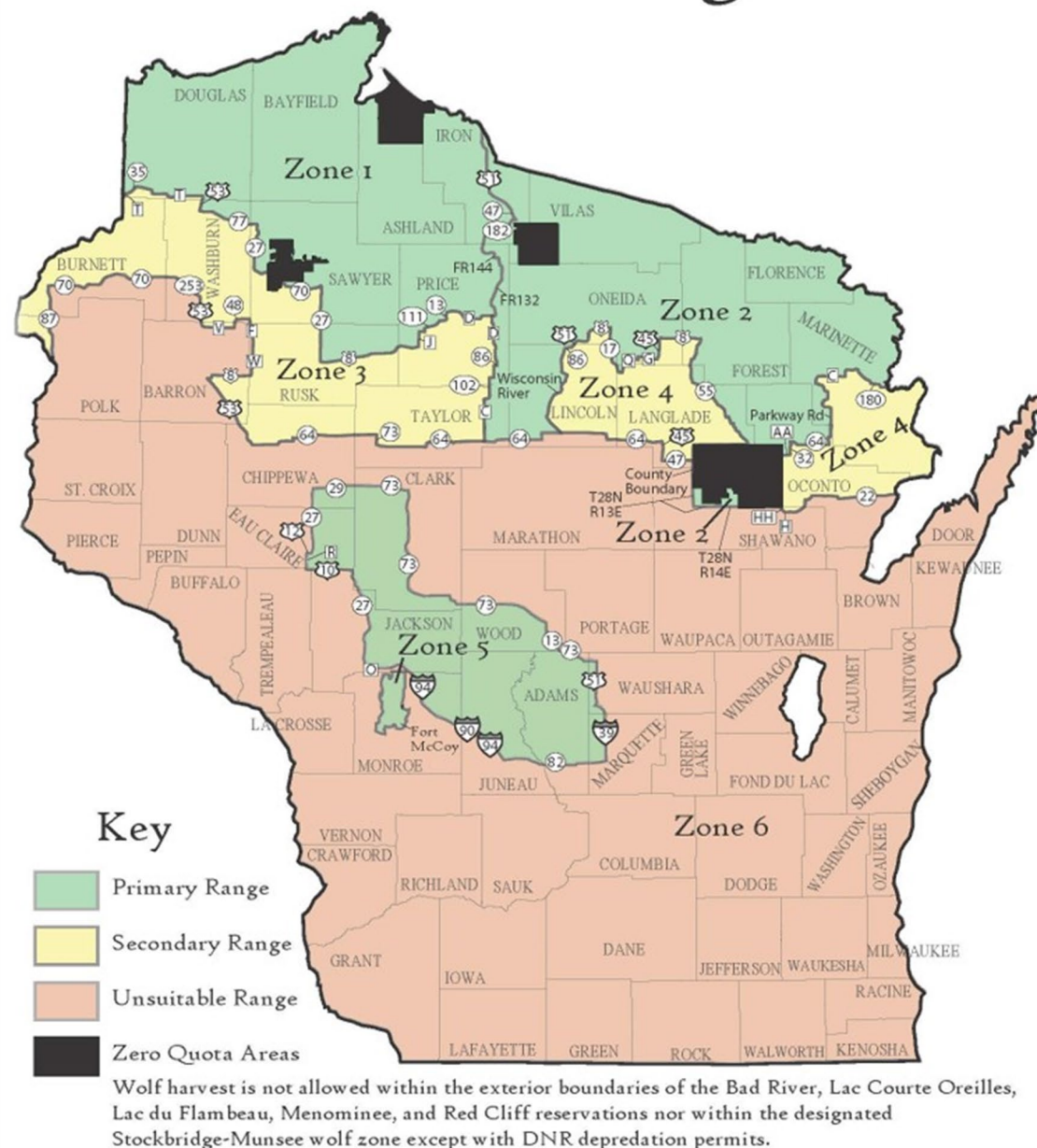
People who care about wolves in the Great Lakes



Wolf Harvesting Zones

Lethal Controls

- Trapping and Shooting by Government Agents
- Landowner Permits
- Regulated Hunting and Trapping Season when delisted



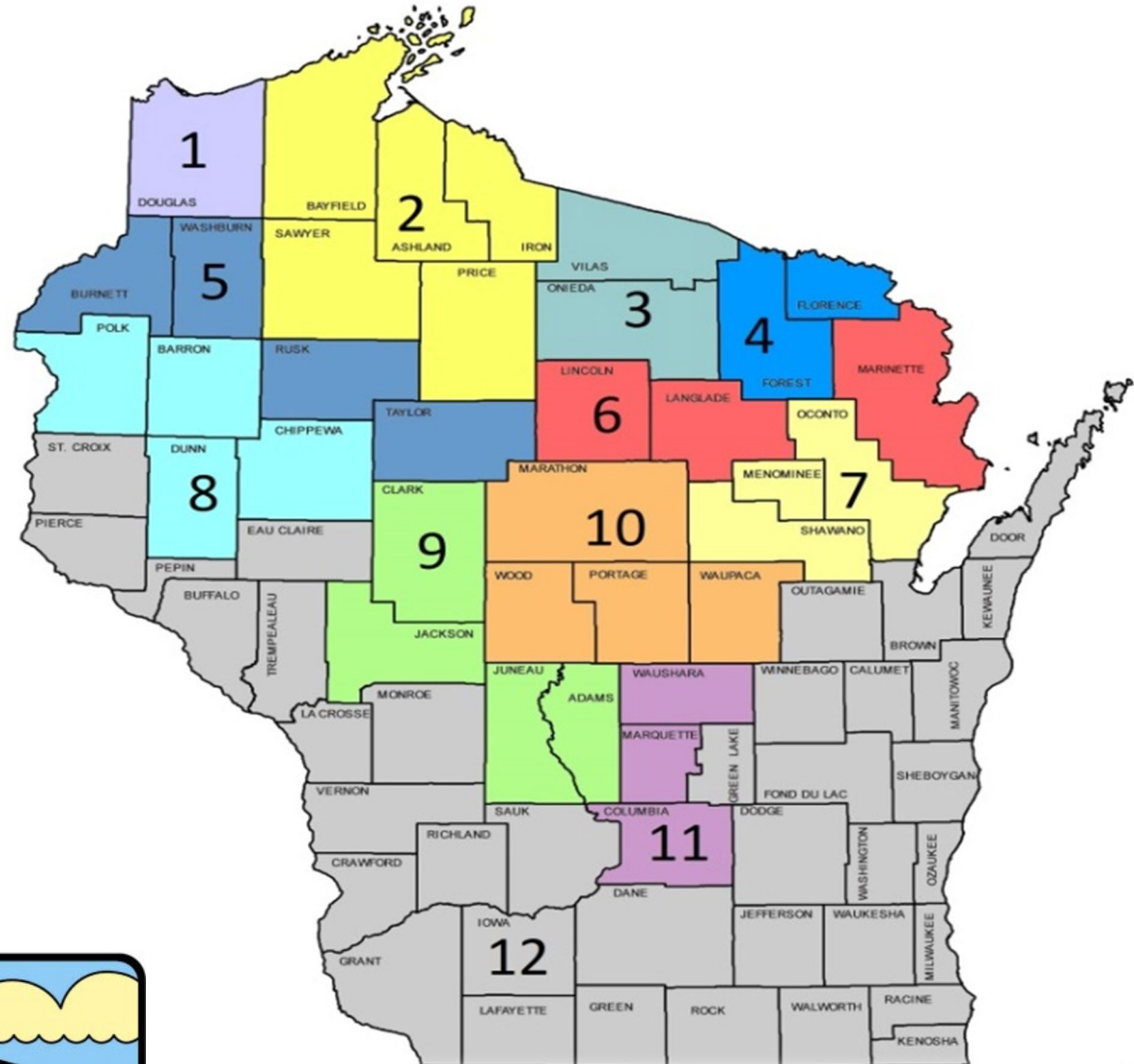
Preventative Non-Lethal Controls of Wolves



Attitudinal Survey of Wolves in WI by WDNR

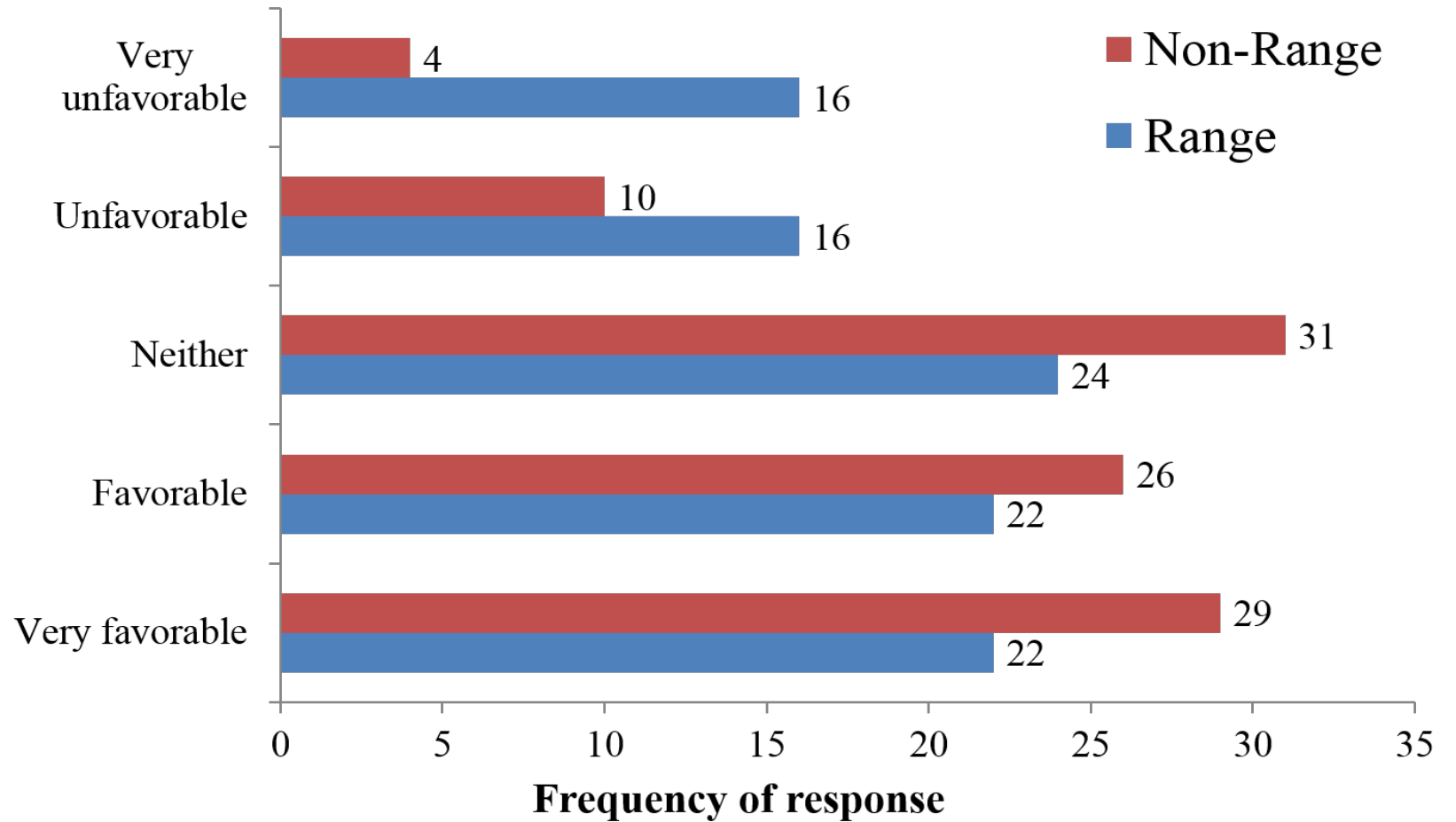
Sampling of Residents in
Wisconsin

- “Wolf Range” – Clusters 1-11
- “Non-Range”- Cluster 12



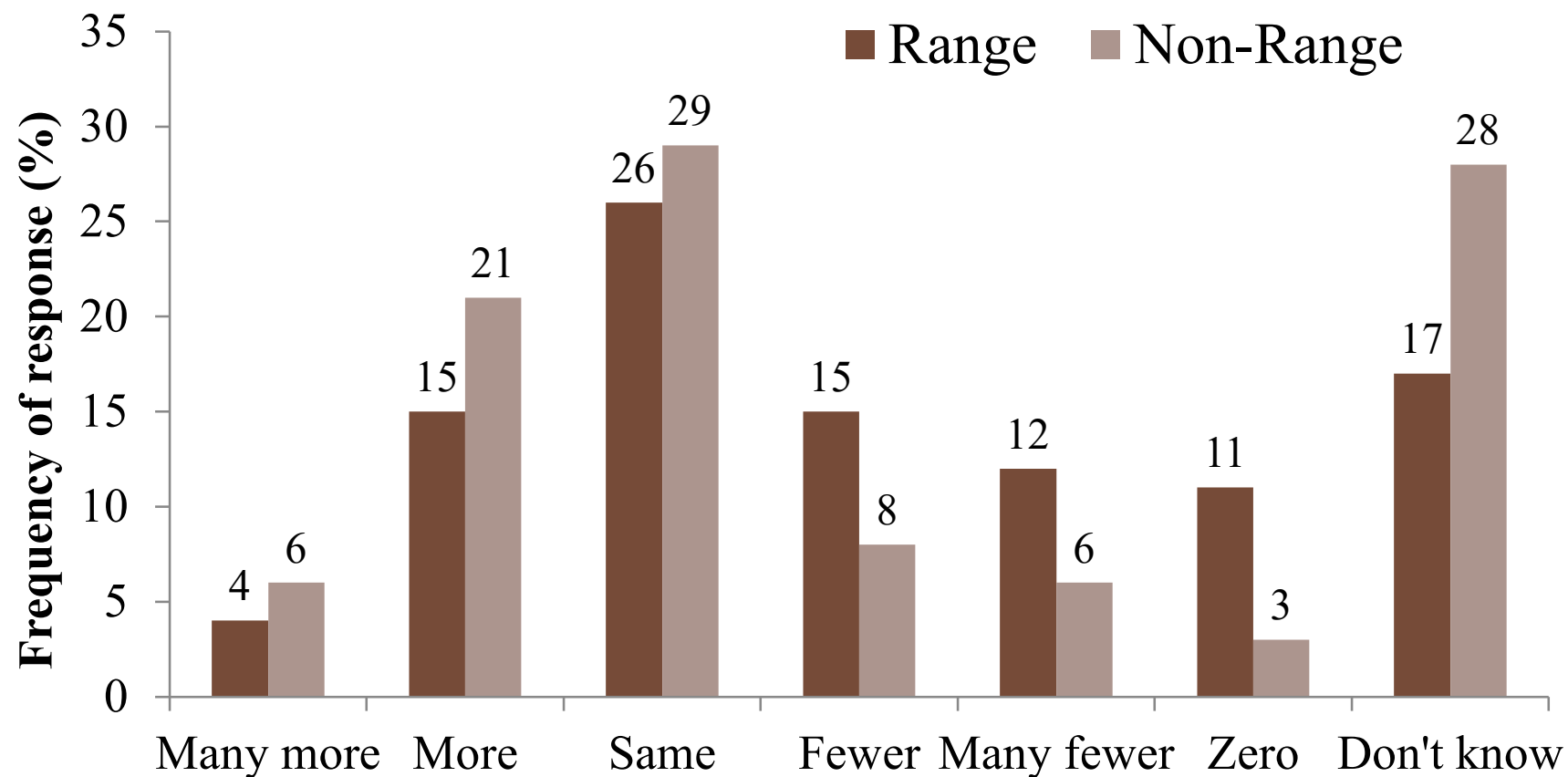


Favorability of Wolves





Statewide Population Goal

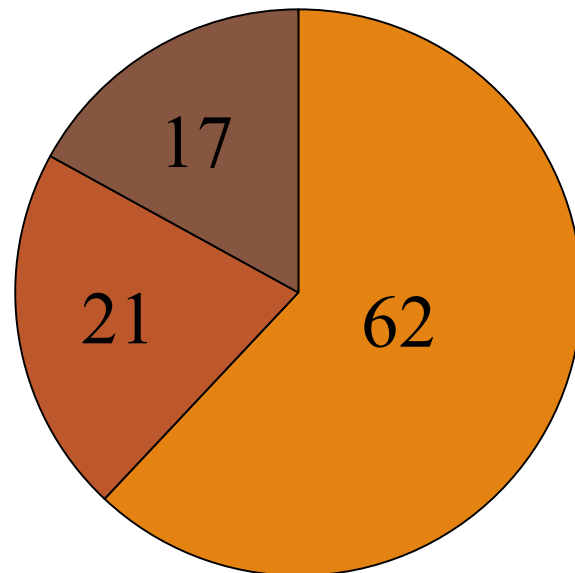




Wolf Harvest

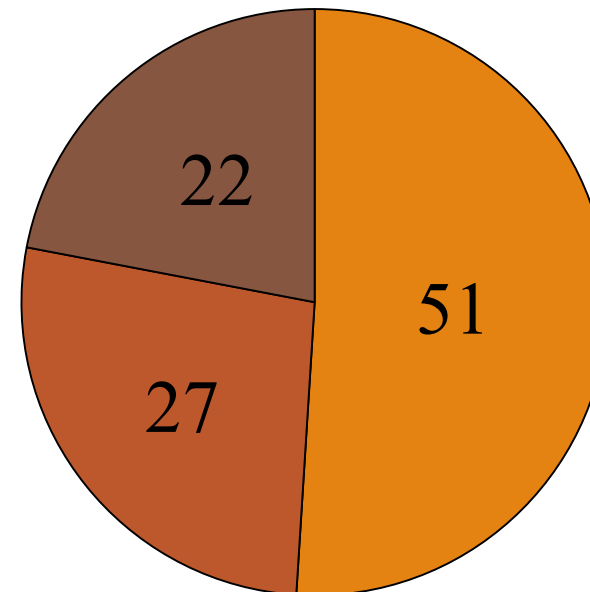


Range



■ Yes ■ No ■ Undecided

Non-range



■ Yes ■ No ■ Undecided

Some tips for living with wolves

- 🐾 Don't feed wolves or leave pet food outside
- 🐾 Report wolves frequently near people to the DNR
- 🐾 Maintain control on pets
- 🐾 In spring and summer, stay away from sites where wolves may have den or rendezvous sites while walking your dog



For more information on wolves...

Check out these sites.

International Wolf Center

Wisconsin DNR

Michigan DNR

Timber Wolf Alliance

Timber Wolf Information
Network

Attend another workshop

- August, Wolf Weekend with TWA
- October, Wolf Ecology Workshop with TWA
- November, Carnivore Tracking Course with TWA

Thank you!

*If you liked our presentation,
please consider donating to the
Timber Wolf Alliance!*

<https://www.northland.edu/sustain/soei/twa/>

MISSION:

To use science-based information to promote an ecologically-functional wolf population within areas of suitable habitat and promote human coexistence with emphasis on Michigan and Wisconsin.

TIMBER WOLF ALLIANCE

SIGURD OLSON ENVIRONMENTAL INSTITUTE

NORTHLAND COLLEGE



QUESTIONS?

FOR MORE INFORMATION, PLEASE VISIT OUR WEBSITE: [HTTPS://WWW.NORTHLAND.EDU/SUSTAIN/SOEI/TWA/](https://www.northland.edu/sustain/soei/twa/)

OR EMAIL US AT [SOEI@NORTHLAND.EDU](mailto:soei@northland.edu)